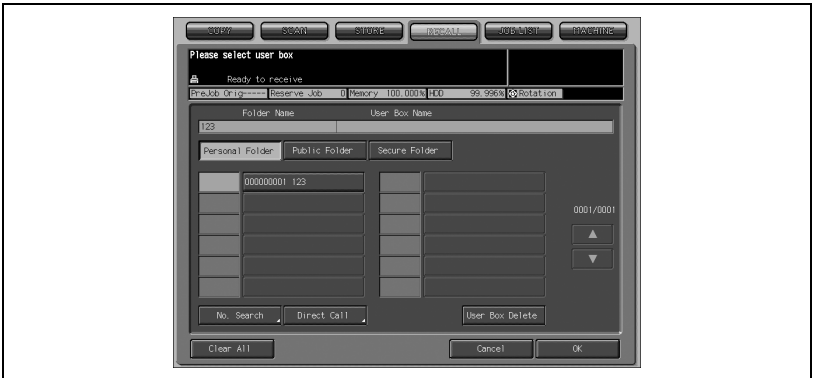


3 Touch [RACALL].



The HDD Box List Screen will be displayed.

4 Touch [Secure] to display the Secure Box List Screen.



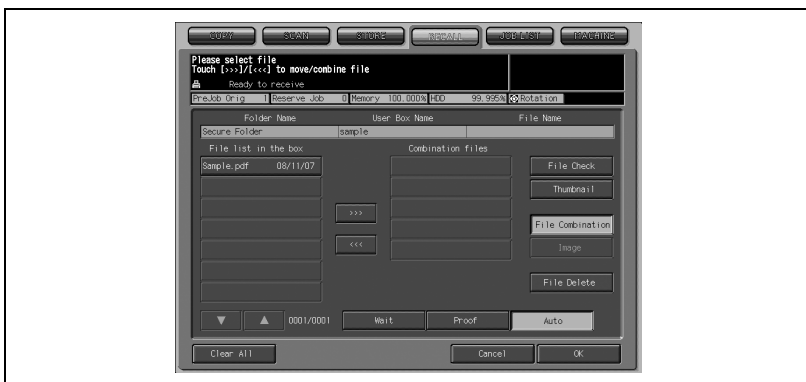
- 5 Select the desired secure box, then touch [OK].



- 6 Enter the secure password setup in secure printing.  
Touch [OK].

The Secure File List Screen will be displayed.

- 7 Select the desired secure file.



- 8 Touch [Wait], [Proof], or [Auto] as desired, then touch [OK].
- Enter the desired print quantity from touch panel keypad.



- Specify the output page of the image data.  
Touch [Change OutputPage].  
To output one page, touch [Page Select], then enter the page number from control panel keypad.  
To output all pages, touch [All Pages].  
Touch [OK] to output.



- 9 When operation is completed, press [Access] on the control panel.
- The User Authentication Screen will be displayed to prohibit the machine operation without entering a user name and password.